

Covid-19 Outbreak Places of Worship

Croydon Public Health Information / discussion session

September 2020

CROYDON
www.croydon.gov.uk

Discussion areas

- **Introductions and housekeeping**
 - Quick update from feedback actions from last meeting
 - If there is a question you would like answered please put it in the chat or raise your hand particularly if you cannot see it in the list below
 - If you would like us to send information directly to you, just add your name, place of worship, email address in the chat
- **Places of Worship Action Cards and outbreak management**
 - Feedback and questions
- **Latest COVID19 guidance**
 - Social Distancing
 - Rule of six and the exceptions to this
 - Face coverings
 - QR codes
 - Weddings, funerals
 - Community spaces
 - Other
- **Season Flu**
- **General discussion – questions, problems and issues**

Introductions

- Ellen Schwartz – Consultant in Public Health
- Corinne Snow – COVID19 Council Comms lead
- Rachel Tilford – Public Health Principal

Council and Public Health responsible for leading / implementing the local COVID-19 Outbreak Response plan

Quick update on feedback from the last meeting

- Use Zoom rather than Teams
- Circulate the slides
- Steps to take in an outbreak circulated
- Send round examples of risk assessments Create a COVID space on the Faiths Together website
- Have another session

Croydon Places of Worship Action Card

ACTION CARD: In the event of positive COVID cases

For use by: PLACES OF WORSHIP in Croydon

This information is for leaders and managers of Places of Worship; it provides key steps to quickly identify and contain any potential COVID-19 outbreak.

Step 1 Report Positive cases

If a member of your community, staff or volunteers inform you that they have tested positive for COVID19 within 10 days of attending your place of worship immediately contact:

1. The Croydon's Director of Public Health on covid19@croydon.gov.uk
2. The local Public Health England Health Protection team (HPT) on 0300 303 0450 or LCRC@phe.gov.uk

Your first notification of the positive test may be from the Health Protection Team or NHS Test and Trace; but you should still email covid19@croydon.gov.uk

Step 2 Inform Information that may be requested

About your Place of Worship	About the cases
<ul style="list-style-type: none"> Name, location, postcode Details for the key contact: name, phone number, email Number of staff, congregation size Building type, layout, capacity Notable demographic factors e.g. languages Copy of the attendance 'register' Completed COVID risk assessment and any other locally developed COVID-19 action plans and control measures. 	<ul style="list-style-type: none"> Contact details of the people affected When the individual(s) became unwell or a test was undertaken When they were last present at the Place of Worship Nature of the roles/job undertaken by any staff / volunteers affected Known links between the individual(s) with COVID-19 (in or out of the setting) Number of people with which the individual(s) had close contact Whether anyone vulnerable required to self-isolate requires support

Do not worry if you do not know all of these items

Step 3 Respond Depending on the type of outbreak

The Health Protection Team and/or Croydon Council:

- Will work with you to assess the risks and advise what action to take.
- May discuss with you any need to send messaging to your community
- May advise to partially or fully close the building, resulting in the setting not being fully open to all worshippers
- May convene an Outbreak Control Team which one of your team will be invited to attend.
- May discuss ways to implement mass testing of your attendees, staff and volunteers

CROYDON | Delivering for Croydon
www.croydon.gov.uk

Public Health England

CORONAVIRUS WORKING AND LIVING SAFELY

A Avoid crowded situations (if unavoidable avoid face-to-face contact)

B Book a test and stay at home if you have symptoms – telephone NHS: 119

I need a test

C Clean your hands and surfaces more frequently than usual for at least 20 seconds using soap and water or alcohol-based sanitiser. Always wash or sanitise your hands before and after travelling to work and/or being in communal spaces

D Keep your distance! 2m is as far as 1m. If 2m is not possible, take other steps to reduce risk such as opening windows, wearing a face covering, avoiding face-to-face contact

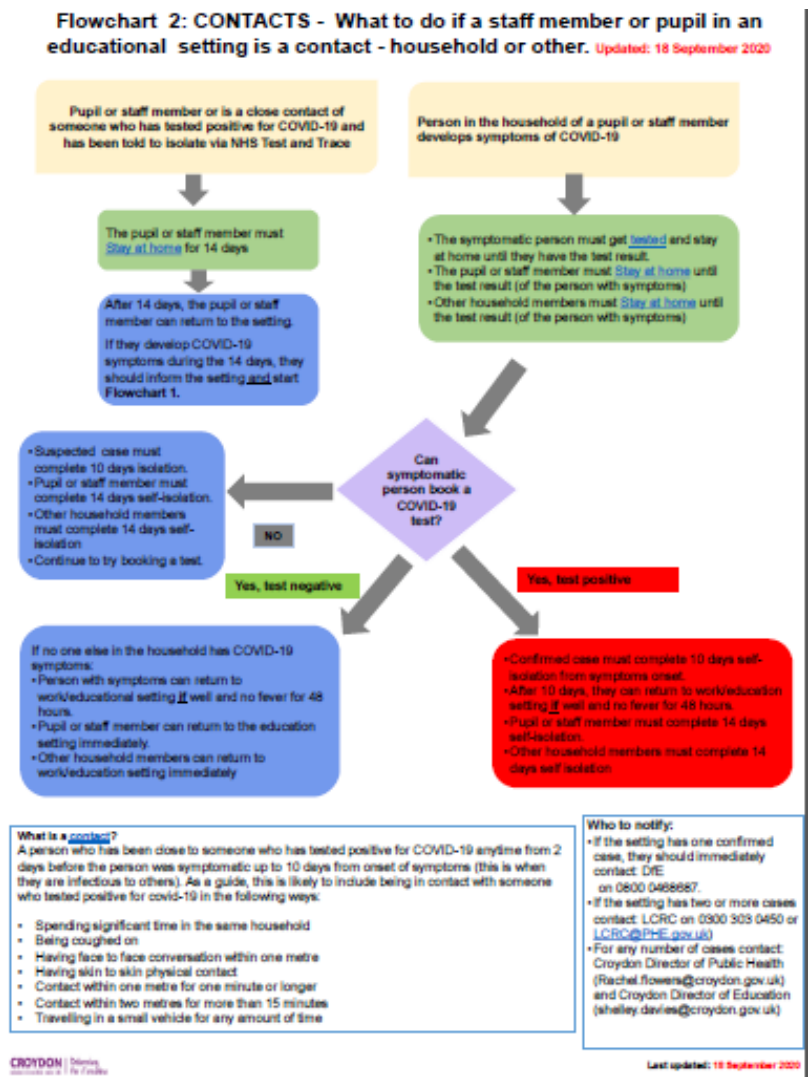
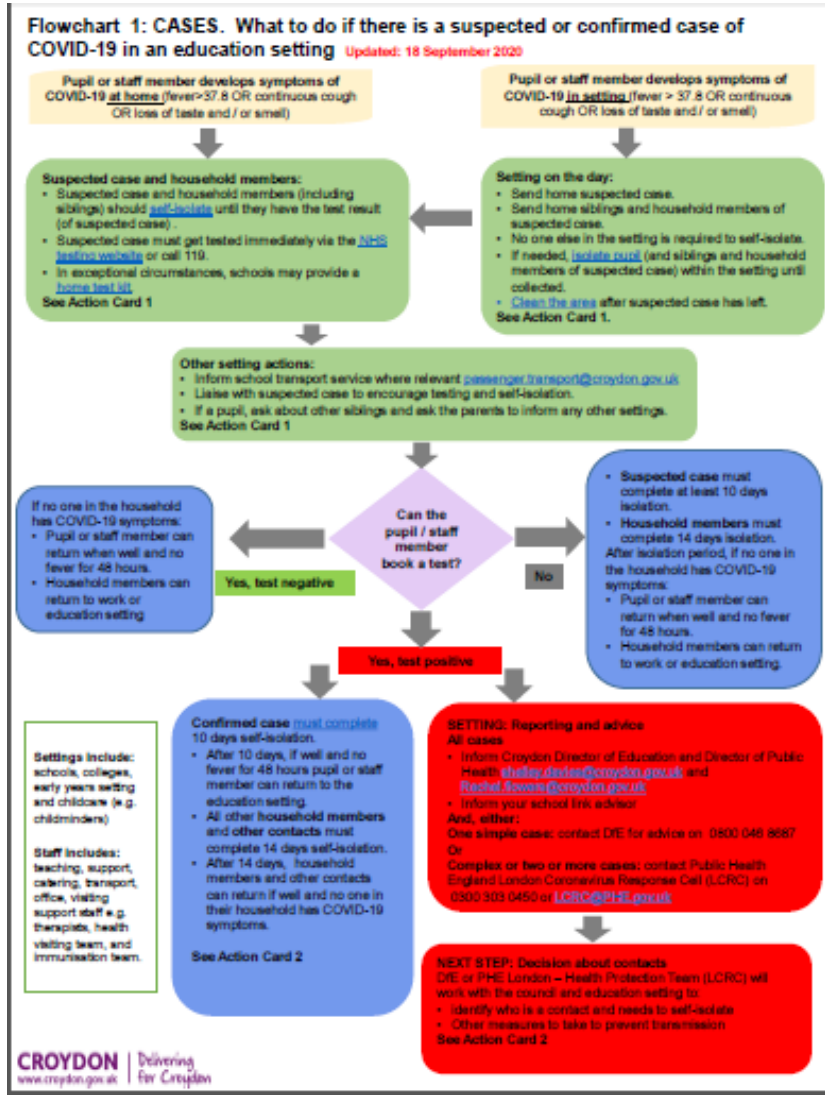
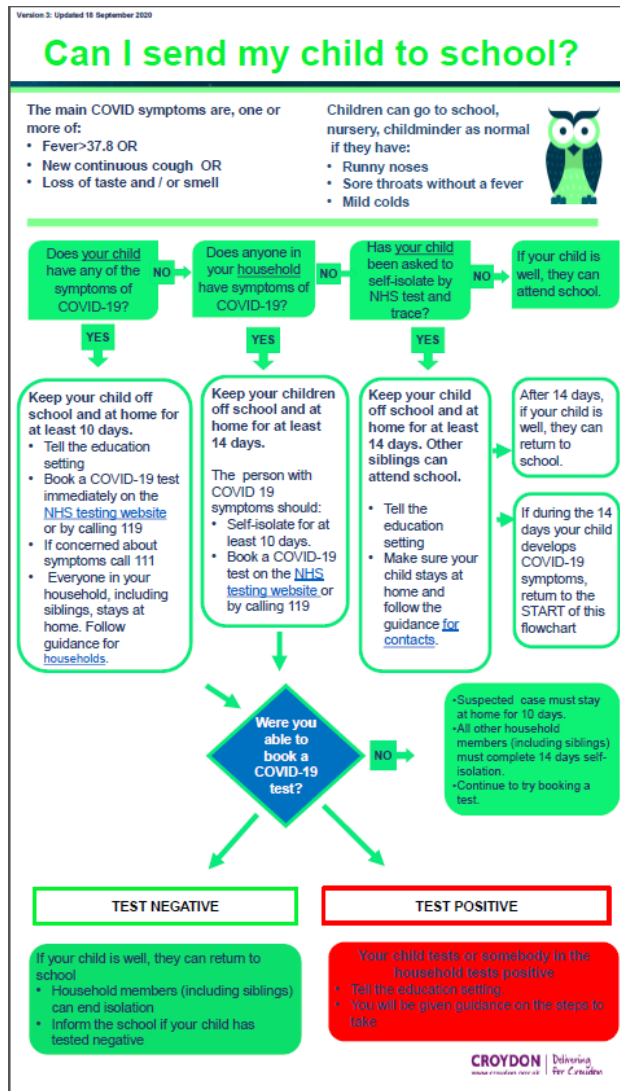
E In enclosed spaces where you can't keep your distance, wear a face covering/mask or other recommended Personal Protective Equipment

F Follow your employers' and government advice to help protect yourself and others

Resources
 The full range of PHE action cards
<https://coronavirusresources.phe.gov.uk/reporting-an-outbreak/resources/small-and-large-gatherings-workplace-action-cards/>
 COVID-19: guidance for the safe use of places of worship and special religious services and gatherings during the pandemic (17 September)
<https://www.gov.uk/government/publications/covid-19-guidance-for-the-safe-use-of-places-of-worship-during-the-pandemic-from-4-july>
 Face Coverings
<https://www.gov.uk/government/publications/face-coverings-when-to-wear-one-and-how-to-make-your-own>
 COVID-19: Guidance for the safe use of multi-purpose community facilities
<https://www.gov.uk/government/publications/covid-19-guidance-for-the-safe-use-of-multi-purpose-community-facilities>
 FAQs
<https://www.gov.uk/government/publications/coronavirus-outbreak-faqs-what-you-can-and-cant-do>

- Circulated last week by Penny
- Any questions / feedback
- Adapted from the national card which has also been circulated
- Have added the Croydon Council contact details, the information poster and additional reference documents

Example Croydon flow charts



COVID-19 Outbreak Management Teams

In the event of an outbreak, the local authority may be requested to establish an Outbreak Management Team management team (OMT) to respond to the outbreak, supported by the London Health Protection Team(LCRC). The membership of this team is:

Role	Title/Member
Chair and Public Health Lead	Public Health Consultant (Consultant refers to the professional title)
Public Health	Public Health Principals
Environmental Health Lead	Head of Environmental Health or Health and Safety (depending on setting)
Communications Lead	Communication Representative
Setting Based/Sector Specialist	Identified based on outbreak setting (e.g. infection control nurse, school nurse, Place of worship Specialist from council – e.g. housing lead, adult social care etc.)
Data Lead	Data Analyst/Intelligence Analyst
Meeting Coordination, Loggist	Democratic Services
CCG Lead	Member of the Clinical Commissioning Group
Testing Lead	Member of Testing Group
Primary Care Lead	Rachel Tunbridge, GP and/or relevant Primary Care Network Clinical Director
HPT Lead	Member of the LCRC

Social distancing

- All managers and all visitors to a place of worship must follow the law and should follow the guidance on social distancing including:
 - People should be 2 metres apart or more than 1 metre apart as well as taking extra steps to stay safe (such as wearing face coverings) to reduce the risk of transmission.
 - For frequently used places, mark areas using floor tape or paint to help people maintain social distance.
 - Ensure that groups attending communal worship together do not exceed more than 6 people per group. This group of 6 can be made up of people from different households, but strict social distancing must be maintained between members of different households at all times.
 - The only exception to this where a single household or support bubble is larger than 6 people. In this case, the single household or support bubble may attend communal worship together.

If a case and have not socially distanced everyone will have to be isolated

Rule of six – key goals

- The primary goal of the new guidance is to reduce the risk of transmission by limiting the numbers of people who gather in informal social settings
- This means when seeing friends and family you do not live with you should:
 - meet in groups of 6 or less, unless the household or support bubble is large than this
 - follow social distancing rules for people not in your household even in the group of six, two metres, or one with mitigations e.g. a face covering, wash or sanitise hands regularly
 - meet people outdoors where practical: meeting people outdoors is safer than meeting people indoors because fresh air provides better ventilation
 - Before and after events
- There are useful exceptions to this to allow organised events and activities to continue

Rule of six exceptions – Places of worship

Detailed activity	Which exception area(s) applies?	Is there a COVID19 risk assessment?	Is mingling between groups of 6 allowed? But still socially distanced
<p>Weddings and civil partnership ceremonies up to 15 people</p> <ul style="list-style-type: none"> • Only in COVID secure venues or public outdoor places • Receptions must be sit down meals <p>FAQ2.9</p>			Yes
<p>Funerals can have up to 30 people.</p> <ul style="list-style-type: none"> • But wakes are limited to six, unless same household or support bubble • Should socially distance from people do not live with (or support bubble) <p>FAQ 2.8</p>			Yes
<p>Christenings, bar/bat mitzvahs can take place as part of a larger gathering within communal worship</p> <ul style="list-style-type: none"> • Standalone religious and belief based life cycle ceremonies must follow rule of six <p>FAQ 2.12</p>			No
<p>Places of worship can be open for services and communal prayer for more than six people</p> <p>FAQ 3.9</p>			No Strict adherence to social distancing

Rule of six exceptions – Places of worship

Detailed activity	Which exception area(s) applies?	Is there a COVID19 risk assessment?	Is mingling between groups of 6 allowed? But still socially distanced
<ul style="list-style-type: none"> • Formal support groups for mutual aid, therapy or other forms of support See note below for examples. • Up to maximum of 15 • In a public place • Organised by a business, a charitable, benevolent or philanthropic institution or a public body) • FAQ 3.17 			Yes
<ul style="list-style-type: none"> • Informal support groups can still meet if in groups of six if: • COVID19 venue or public outdoor space • FAQ3.17 			No

Face Coverings – Places of Worship

- Face coverings must be worn in indoor Places of Worship
- People are expected to wear a face covering before entering and must keep it on until you leave unless there is a reasonable excuse for removing it.
- Premises where face coverings are required should take reasonable steps to promote compliance with the law.

When face coverings do not need to be worn or can be removed

When / who not required :

- Children under the age of 11 (Public Health England does not recommend face coverings for children under the age of 3 for health and safety reasons)
- People who cannot put on, wear or remove a face covering because of a physical or mental illness or impairment, or disability
- Where putting on, wearing or removing a face covering will cause severe distress
- When speaking to or providing assistance to someone who relies on lip reading, clear sound or facial expressions to communicate

When face coverings can be removed

- if you are delivering a sermon or prayer in a place of worship
- if you are the persons getting married in a relevant place
- if you are aged 11 to 18 attending a faith school and having lessons in a place of worship as part of your core curriculum
- In order to take medication

<https://www.gov.uk/government/publications/face-coverings-when-to-wear-one-and-how-to-make-your-own/face-coverings-when-to-wear-one-and-how-to-make-your-own> 24 September

QR codes and Places of Worship

Create a coronavirus NHS QR code for your venue

- Use this service to create a QR code for display in your venue. Get visitors to scan the QR code when they arrive, using the NHS COVID-19 app. This is to help trace and stop the spread of coronavirus (COVID-19).

You should create and display a QR code if you are:

- a business, place of worship or community organisation with a physical location that is open to the public
 - an event which is taking place in a physical location
 - If you have more than one venue, you need to create a separate QR code for each location. You can add multiple locations in the service.
 - Create your QR code
- https://create-qr-code-poster.service.gov.uk/createposter/contact-details?_ga=2.247334916.1828180562.1600672314-443512217.1595941347

Some outbreak definitions

- **Single suspected/possible case** – an attendee or staff member with coronavirus symptoms (fever, persistent new cough, and/or loss of taste/smell)
- **Single confirmed case** – an attendee or staff member who has tested positive for coronavirus
- **Single complex case** – a suspected or confirmed case of coronavirus where this is complicated factors for the setting or those involved (e.g. special educational needs)
- **Cluster** - two or more confirmed cases of COVID-19 among attendee or staff in the same location within 14 days; **OR** an increase in the background rate of absence due to suspected or confirmed cases of COVID-19 (does not include absence rate due to individuals shielding or self-isolating as contacts of cases)

Other useful sites

Muslim Council of Britain

- <https://mcb.org.uk/resources/coronavirus/>
- https://mcb.org.uk/wp-content/uploads/2020/08/Toolkit_DealingWithPositiveCOVID19Case_21Aug.pdf

• Church of England

- <https://www.churchofengland.org/more/media-centre/news/covid-19-places-worship-and-restriction-social-gatherings>

• The Inter Faith Network

- <https://www.interfaith.org.uk/news/faith-communities-and-coronavirus>

• Croydon Faiths Together

- <https://faithstogetherincroydon.org.uk/news/covid-places-of-worship/>

Seasonal flu vaccination – why so important

- This year the government is launching the largest flu vaccination programme in history
- More people than ever before are eligible for a free flu vaccination
- Flu can be deadly and is easily spread. You can have no symptoms but unknowingly spread it to your family and other people in your community.
- Flu immunisation protects not only yourself but also your family and friends

- **If you are eligible, please get the flu jab**

Main groups of people who are eligible for flu vaccination from their GP or pharmacy

- People aged six months to under 65 years who are "at risk" for example because they have diabetes, high blood pressures or other long term conditions
- People aged 65 years and over
- Children aged 2 to 12 years
- people with learning disabilities
- People who care for others – eg who receive a carer's allowance
- Pregnant women
- Those on the shielding list and everyone who lives in the same household as them
- Anyone who works in health or social care as a front line worker

- Those aged 50 to 65 years will be invited for a flu jab **but later in the year**

Seasonal flu vaccination – busting some myths

- **Can the flu vaccine cause flu?**

- No. The injectable vaccine does not contain any live viruses, so it cannot cause flu. You may get a slight temperature, and your arm may feel a bit sore where you had the injection. Other reactions are rare.

- **I had the flu vaccination last year. Do I need to have it again?**

- Yes. The viruses that cause flu change every year, which means the flu (and the vaccine) this year may be different from last year.

Contacts?

- **‘Contacts’** are usually defined as anyone in close contact with a confirmed case from 48 hours prior to onset of symptoms until they self isolate.
- **‘Close contact’** means:
 - Face-to-face contact within one metre; or
 - More than 15 minutes within two metres; or
 - Other household members; or
 - Travelling in a car or other small vehicle or close to them on a plane

Guidance: Places of worship

COVID-19: guidance for the safe use of places of worship during the pandemic Updated 24 September 2020

<https://www.gov.uk/government/publications/covid-19-guidance-for-the-safe-use-of-places-of-worship-during-the-pandemic-from-4-july/covid-19-guidance-for-the-safe-use-of-places-of-worship-during-the-pandemic-from-4-july>

Special religious services and gatherings COVID-19 checklist – Updated 24th September

<https://www.gov.uk/government/publications/covid-19-guidance-for-the-safe-use-of-places-of-worship-during-the-pandemic-from-4-july/special-religious-services-and-gatherings-covid-19-checklist>

High Holy Day services and gatherings COVID-19 checklist - Updated 24th September

<https://www.gov.uk/government/publications/covid-19-guidance-for-the-safe-use-of-places-of-worship-during-the-pandemic-from-4-july/high-holy-day-services-and-gatherings-covid-19-checklist>

Gatherings outside

- Recognised that prayers in the park and other outdoor spaces are an important feature of some festivals.
- Gatherings of more than six people in a public outdoor space are against the law unless the gathering is exempt/ has been organised by a business, charity, a benevolent or philanthropic organisation or a public or political body applying COVID secure risk controls.
- **COVID-19: Guidance for small marriages and civil partnerships**

<https://www.gov.uk/government/publications/covid-19-guidance-for-small-marriages-and-civil-partnerships/covid-19-guidance-for-small-marriages-and-civil-partnerships> Updated 26th September

Questions and discussion

Email address covid19@croydon.gov.uk